

NEWS - NEWS - NEWS- NEWS

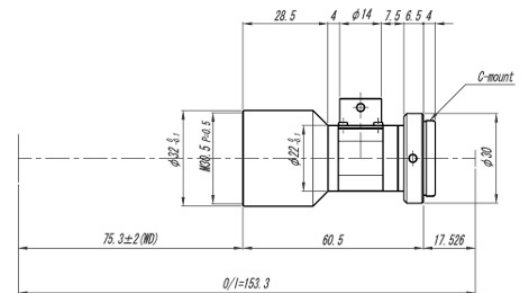
TCH - Series

High Resolution Telecentric Lenses

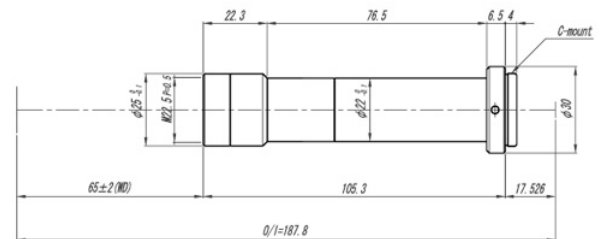
TCH-series is the best compromise between highest resolution (TCM-series) and biggest depths of field (TC-series)



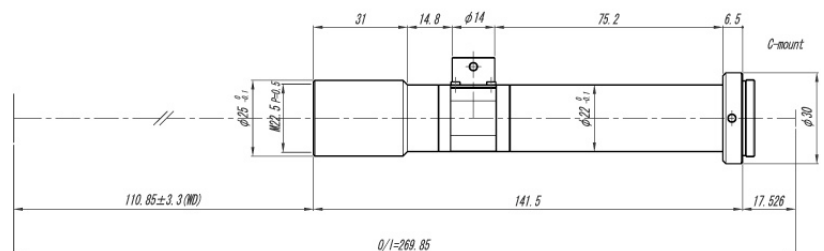
- Accurate measurement in combination with megapixel cameras
- Maximum sensor size 2/3"
- Working distance 65/110mm
- Prepared for coaxial illumination
- Customized version available



VS-TCH05-65CO



VS-TCH4-65



VS-TCH6-110CO

NET GmbH
Lerchenberg 7
D-86923 Finning

Fon +49 8806 92 34-0
Fax +49 8806 92 34-77
info@net-gmbh.com

www.net-gmbh.com

NET USA, Inc.
3037 - 45th Street
Highland, IN 46322

Fon +1 219 934 90 42
Fax +1 219 934 90 47
info@net-usa-inc.com

www.net-usa-inc.com

NET Japan Co., Ltd.
8F Shin-Yokohama, Kohoku-ku,
Yokohama - shi 222-0033, JAPAN

Fon +81 45 478 1020
Fax +81 45 476 2423
info@net-japan.com

www.net-japan.com



High Resolution Telecentric Lenses

Working Distance 65mm

Part number	Optical Magnific.	FOV (V x H mm) 2/3"	WD (mm)	NA	DOF* (mm)	TV Distortion (max)	Filter Thread
VS-TCH05-65 VS-TCH05-65CO	0.5x	13.2 x 17.6	75.3	0.027	3.0	0.016%	M30.5 x P0.5
VS-TCH08-65 VS-TCH08-65CO	0.8x	8.3 x 11.0	70.3	0.042	1.2	0.007%	M22.5 x P0.5
VS-TCH1-50 VS-TCH1-50CO	1.0x	6.6 x 8.8	53.3	0.05	0.8	0.02%	M22.5 x P0.5
VS-TCH1-65 VS-TCH1-65CO	1.0x	6.6 x 8.8	68.8	0.05	0.8	0.009%	M22.5 x P0.5
VS-TCH1.5-65 VS-TCH1.5-65CO	1.5x	4.4 x 5.9	65	0.064	0.4	0.014%	M22.5 x P0.5
VS-TCH2-65 VS-TCH2-65CO	2.0x	3.3 x 4.4	65	0.074	0.3	0.03%	M22.5 x P0.5
VS-TCH4-65 VS-TCH4-65CO	4.0x	1.7 x 2.2	65	0.112	0.09	0.015%	M22.5 x P0.5
VS-TCH6-65 VS-TCH6-65CO	6.0x	1.1 x 1.5	65.8	0.111	0.06	0.022%	M22.5 x P0.5

Working Distance 110mm

Part number	Optical Magnific.	FOV (V x H mm) 2/3"	WD (mm)	NA	DOF* (mm)	TV Distortion (max)	Filter Thread
VS-TCH05-110 VS-TCH05-110CO	0.5x	13.2 x 17.6	110.8	0.026	3.04	0.018%	M30.5 x P0.5
VS-TCH08-110 VS-TCH08-110CO	0.8x	8.3 x 11.0	110.7	0.036	1.38	0.021%	M27 x P0.5
VS-TCH1-110 VS-TCH1-110CO	1.0x	6.6 x 8.8	110.3	0.045	0.88	0.021%	M27 x P0.5
VS-TCH1.5-110 VS-TCH1.5-110CO	1.5x	4.4 x 5.9	110.8	0.063	0.43	0.019%	M27 x P0.5
VS-TCH2-110 VS-TCH2-110CO	2.0x	3.3 x 4.4	110.8	0.074	0.27	0.026%	M27 x P0.5
VS-TCH4-110 VS-TCH4-110CO	4.0x	1.7 x 2.2	110.9	0.09	0.11	0.027%	M27 x P0.5
VS-TCH6-110 VS-TCH6-110CO	6.0x	1.1 x 1.5	110.9	0.075	0.09	0.03%	M22.5 x P0.5

*Permissible Circle of Confusion 0.04mm, larger DOF available, for all models • Sensor size (max) : 2/3" •

Model number with "CO" includes integrated Co-axial lighting slot • C-mount

Design and technical data may be changed without notice. Factual and printing errors can not be excluded.

NET GmbH
Lerchenberg 7
D-86923 Finning

Fon +49 8806 92 34-0
Fax +49 8806 92 34-77
info@net-gmbh.com

www.net-gmbh.com

NET USA, Inc.
3037 - 45th Street
Highland, IN 46322

Fon +1 219 934 90 42
Fax +1 219 934 90 47
info@net-usa-inc.com

www.net-usa-inc.com

NET Japan Co., Ltd.
8F Shin-Yokohama, Kohoku-ku,
Yokohama - shi 222-0033, JAPAN

Fon +81 45 478 1020
Fax +81 45 476 2423
info@net-japan.com

www.net-japan.com

