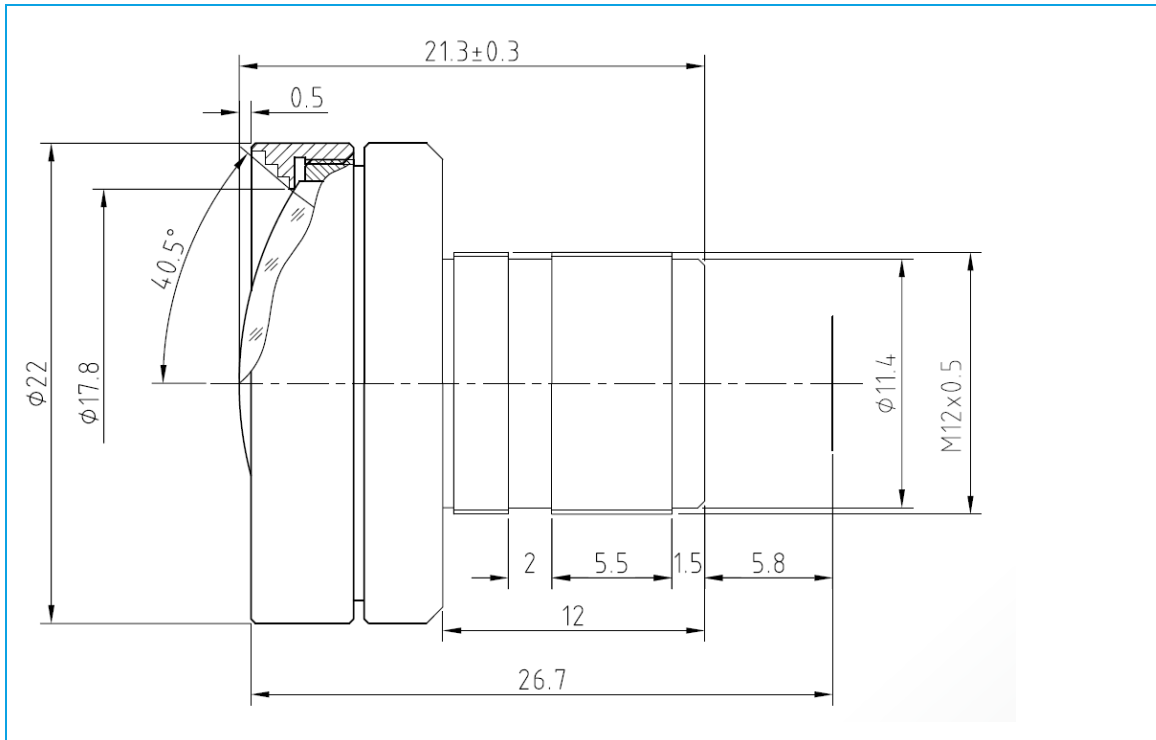


# L-M12-3M03516S30

S-Mount Lens M12 x 0.5



## Technical Data

Mount	S-Mount
Sensor	1/3 inch
Focal Length	3.5 mm
Aperture	1.6
MOD	0.2 m
Back Focal	5.97 mm
Angle of View	D:81° H:68° V:53.5°
Megapixel	1-2 MP
IR Correction	Yes
Distortion	1.9 %
Weight	13 g
Iris	fixed
Focus	fixed
Chief ray angle	10 °
Typ	Standard