



VL-CS SERIES

- For Telecentric Lens illumination.
- 12V / 24V / 700mA models are available.
- RoHS Compliant.

Able to choose best model from our variety line-up of Co-axial Spot light.

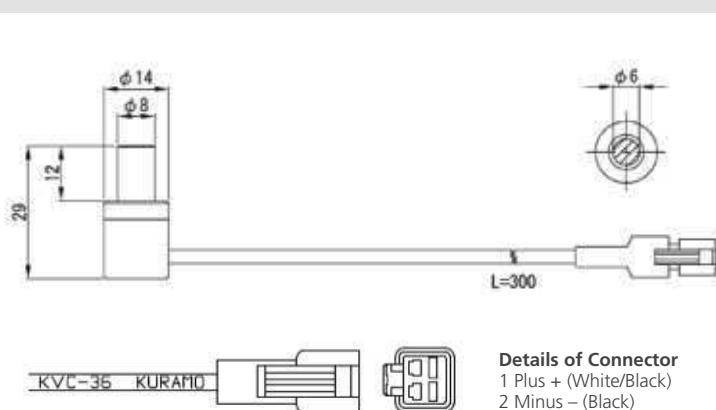
Control	Brightness ← → High			
12V	VL-CS0814			
24V	VL-CS2414	VL-CSN2414	VL-CSH07 + Register Box	
Current				VL-CSH07

If you have a concern choosing suitable model for your system, please feel free to let us know.

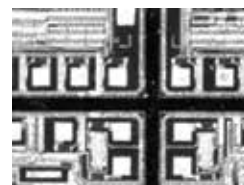
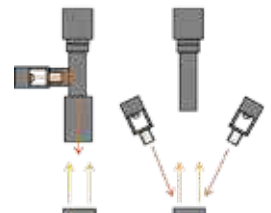
VL-CS SERIES (12V TYPE)

Model No.	Color	Dimension Of Lighting Area (mm)	Power Consumption (Max.)	
VL-CS0814R	● Red	φ 6	12V	0.6W
VL-CS0814W	○ White			0.5W
VL-CS0814B	● Blue			0.8W
VL-CS0814IR850	● IR850			1.0W

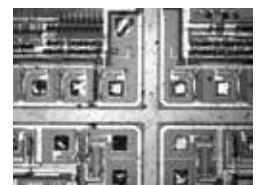
VL-CS0814*



Sample image comparison between VL-CS and Direct Ring Light model.



Direct Ring image



VL-CS image

CO-AXIAL SPOT LIGHT (24V TYPE)



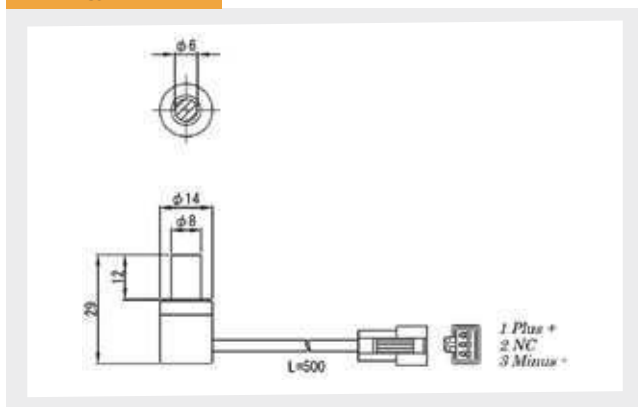
VL-CS SERIES (24 V TYPE)

- For Telecentric Lens illumination.
- Wide angle type / Narrow angle type
- Ultra-compact design.
- RoHS Compliant.

Model No.	Color	Dimension Of Lighting Area (mm)	Power Consumption (Max.)
VL-CS2414R	● Red	φ 6	0.8W
VL-CS2414W	○ White		1.0W
VL-CS2414B	● Blue		0.9W
VL-CS2414G	● Green		0.8W
VL-CS2414IR850	● IR850		1.3W
VL-CSN2414R	● Red	φ 5.5	1.0W
VL-CSN2414W	○ White		1.0W
VL-CSN2414B	● Blue		1.0W
VL-CSN2414G	● Green		1.0W

*VL-CS2414R is Wide angle model > suitable for low magnification Telecentric Lens.
VL-CSN2414 is Narrow angle model > suitable for high magnification Telecentric Lens.

VL-CS2414*



VL-CSN2414*

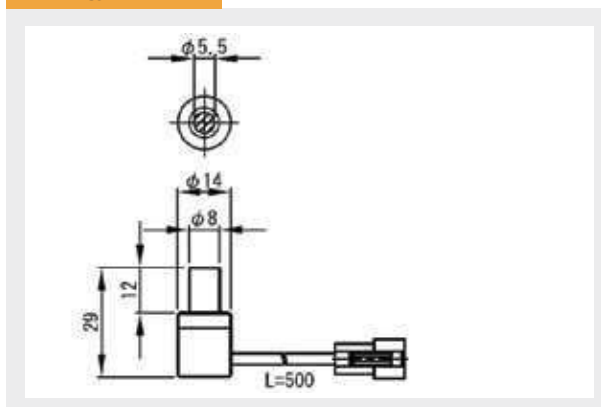
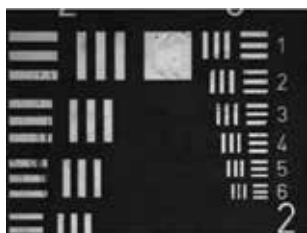
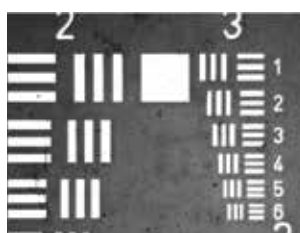


Image comparison between VL-CS2414 and VL-CSN2414.



*VL-CS2414R



*VL-CSN2414R

VS-CS2414* : Wide Angle type

Suitable for low-magnification Telecentric lens since wide angle type provides better evenness even low magnification use. Also suitable for high-reflection object's inspection which you don't need high-brightness but need sensitive brightness control.

VL-CSN2414* : Narrow Angle type

Suitable for high-magnification Telecentric lens such as 1x / 2x or more. Provide higher brightness than VL-CS2414 even the similar power consumption.