

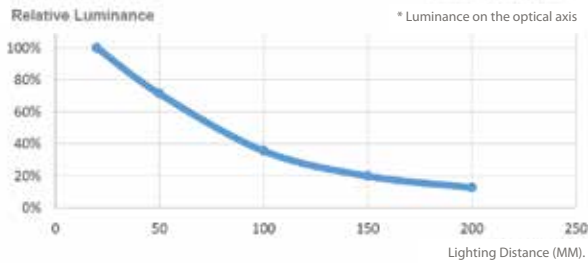
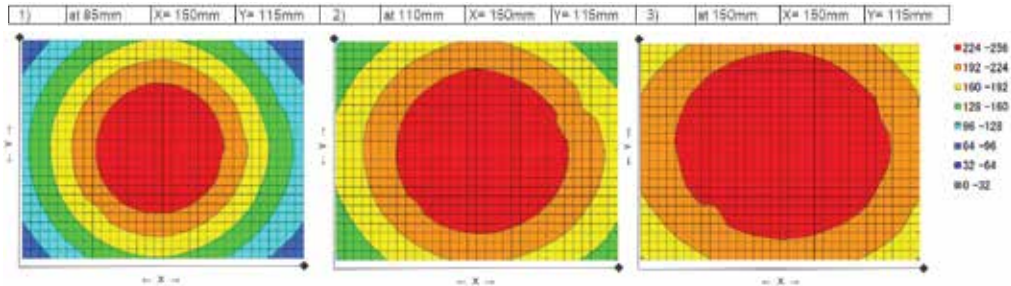
## VL-RD SERIES

- Ring Diffused Light model.
- Suitable for inspection of glossy object.
- Prevention of LED glare and reflections.
- Light evenly spread out onto the object surface.
- RoHS Compliant.

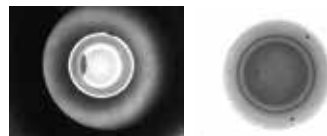
Model No.	Color	Internal Ring Dia. (mm)	External Ring Dia. (mm)	Power Consumption (Max.)
VL-RD44123R	● Red	φ 44	φ 123	3.4W
VL-RD44123W	○ White			8.8W
VL-RD44123B	● Blue			9.3W
VL-RD44123-180	○ White		φ 123 (Half Ring)	4.4W

### Brightness Distribution

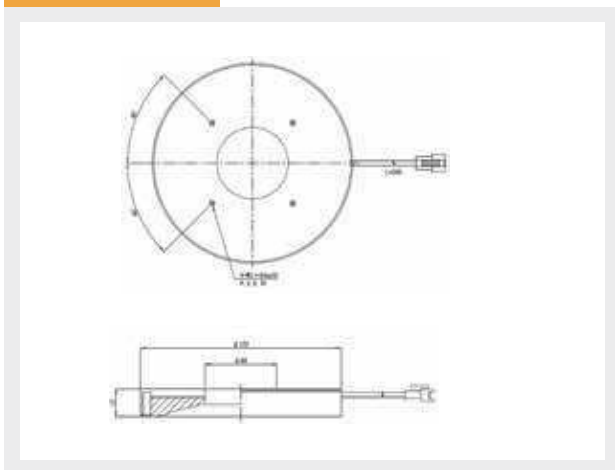
Example: VL-RD44123W (14,000lux at LWD20mm)



Sample image of VS-RD series. Inside cap inspection.



### VL-RD44123\*



### VL-RD44123\*-180

